

## TOUCH-UP KIT

1.XXX.YYYY-ZZZ

Touch-up kit for RAL powder coated surfaces



1. [TECHNICAL DATA](#)
2. [PRODUCT INFORMATION](#)
3. [USE](#)
4. [ADHESION TEST](#)
5. [ADHESION TEST ON SILICONE SEALANT](#)

# TOUCH-UP KIT

Touch-up kit for RAL powder coated surfaces

---

## 1. TECHNICAL DATA

### • PRODUCT FEATURES

The touch-up kit consists of a mini dose of nitro enamel prepared **to match the specific GI-Color shade purchased by the customer**. The kit is designed for retouching painted surfaces that have suffered scratches or gouges. The paint provided offers full coverage and is effective for both light scratches and deep gouges that expose the underlying surface.

### • TECHNICAL SPECIFICATIONS

Chemical nature	Nitro paint
Finish	Smooth glossy
Compatibility	Polyester powder-coated surfaces
Usability	Smooth glossy, smooth matt and textured finishes



Figure 1-2: Application of the *touch-up* paint (before and after)

**N.B. – The *Touch-up* kit cannot be used on fluorescent powder coatings**

# TOUCH-UP KIT

Touch-up kit for RAL powder coated surfaces

---

## 2. PRODUCT INFORMATION

### • CONTENTS

- 2 small bottles, 12 g of varnish each
- 2 small brushes for the application

Product code: 1.XXX.YYYY-ZZZ

### • AVAILABILITY AND SHELF LIFE

Available colours: all GI Color codes can be formulated.

Shelf life: 14 months

Once opened it can be stored for 15 days



Figure 3 – 4: Box and contents

# TOUCH-UP KIT

Touch-up kit for RAL powder coated surfaces

---

## 3. USE

### • APPLICATION

One thin coat of paint is applied on the damaged area and left drying at room temperature. This process must be done quickly to get a homogeneous result.

Test the paint over a hidden part of the object before applying it on the damaged area.

- Flash-off time: 30 minutes
- Drying time: 60 minutes

### • EXAMPLE

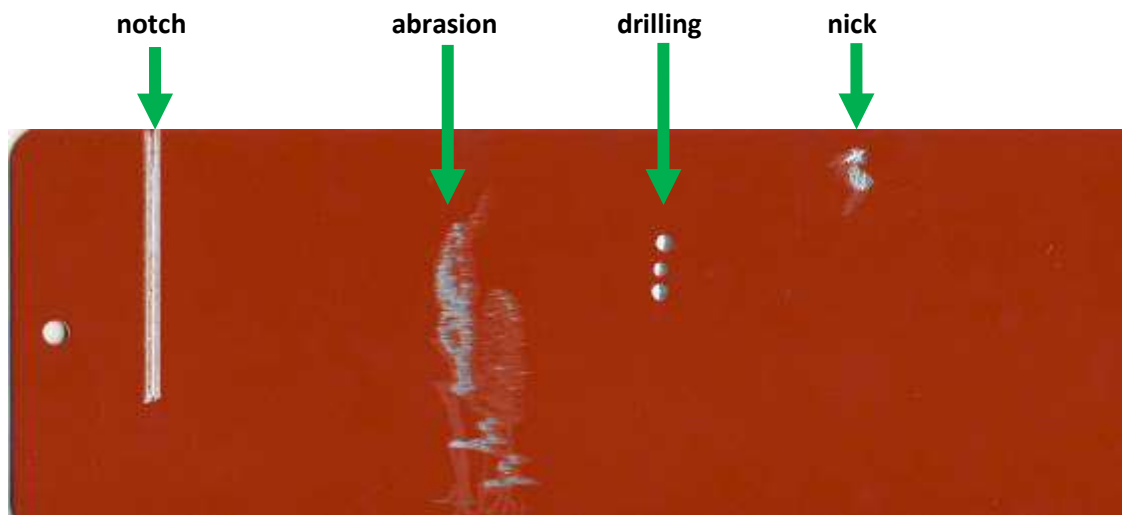
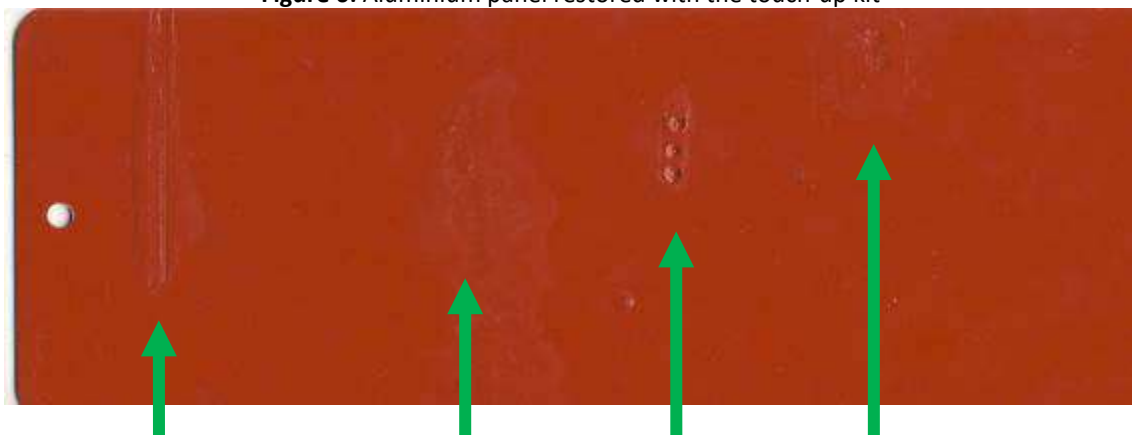


Figure 5: Aluminium panel damaged to uncover the metal substrate

Figure 6: Aluminium panel restored with the touch-up kit



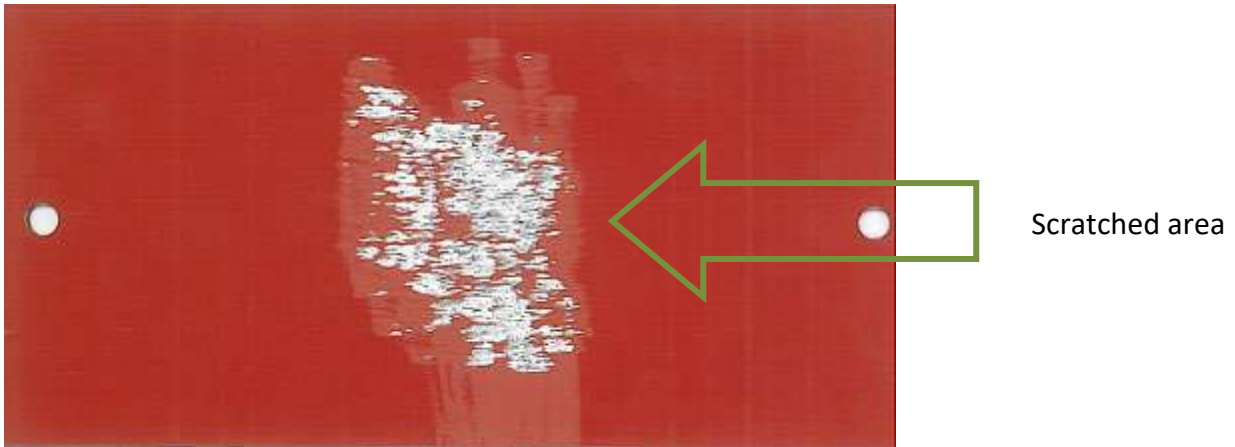
One layer of touch-up paint perfectly covers every damage

**TOUCH-UP KIT**

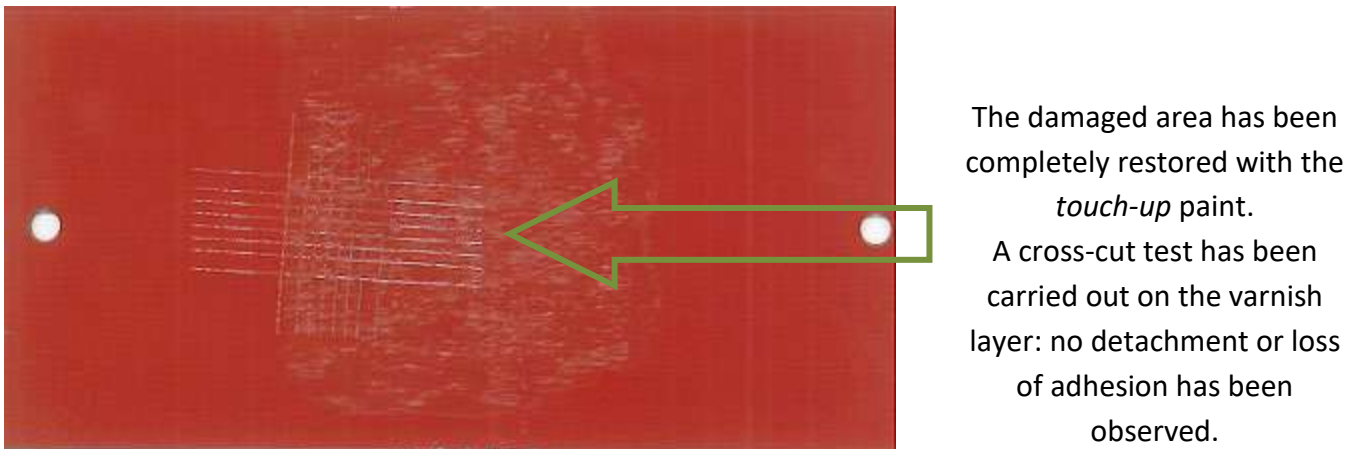
#### 4. ADHESION TEST

- CROSS-CUT TEST

The touch-up paint adheres well to the surface. A cross-cut test (ISO 2409) has been carried out to determine the mechanical resistance.



**Figure 7:** Aluminium panel before application of Touch-up paint.



**Figure 8:** Aluminum panel after application of Touch-up paint and cross-cut test.

***TOUCH-UP KIT***

## 5. ADHESION TEST ON SILICON

The adhesion of the Touch-up paint has been tested on different types of commercial silicone sealant. The test was carried out on aluminium plates using the following silicone sealants:

- Neutral MEKO oxime-free silicone sealant (*Pattex SL620 Solyplast - FUSION XLT*);
- One-component **paintable** acrylic sealant (*Saratoga Acrylic Sealant*);
- High modulus, hybrid polymer-based **paintable** adhesive sealant (*Fisher KD Ultra 60*);
- One-component, neutral cross-linking, **paintable** silicone sealant (*Ottoseal S113*).

Here below the codes of the Touch-up Kit used:

- RAL 5010;
- RAL 9010;
- RAL 6021.

1. Two strips of each type of silicone have been applied on an aluminium plate and left to dry.

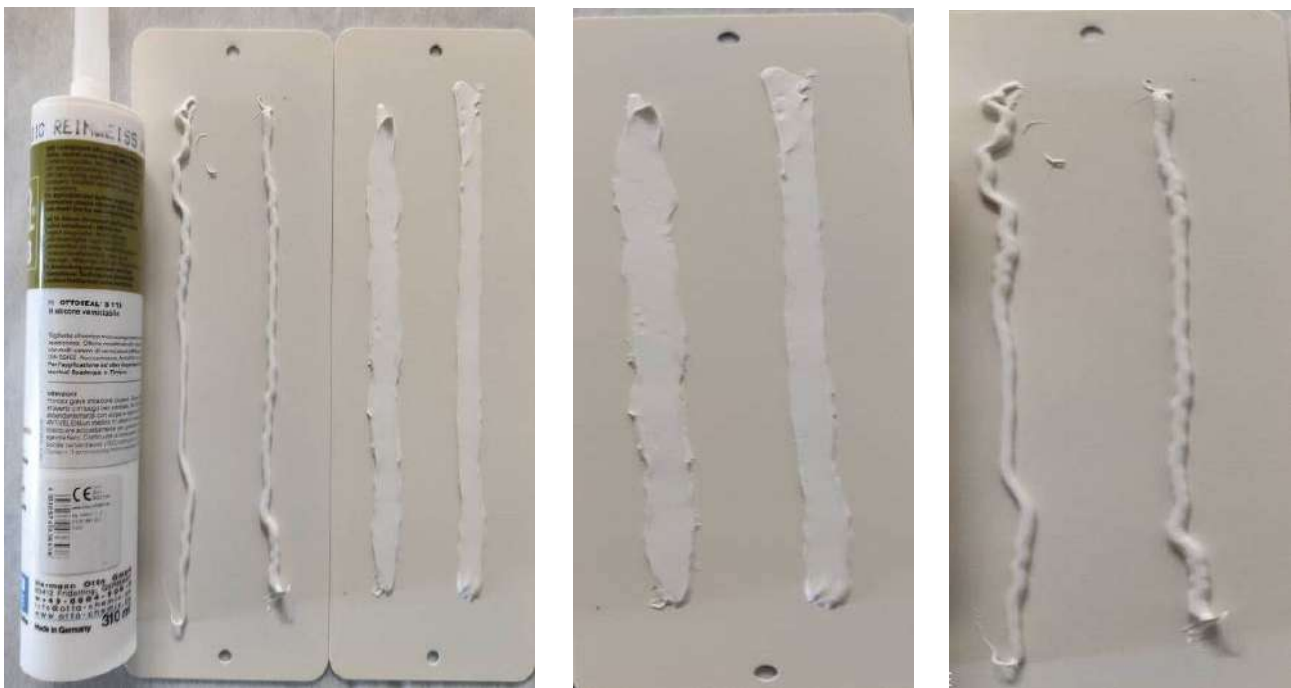


Figure 9 – 10 - 11: Sample preparation

## **TOUCH-UP KIT**

2. The silicone sealant has been completely covered with the Touch-up paint.

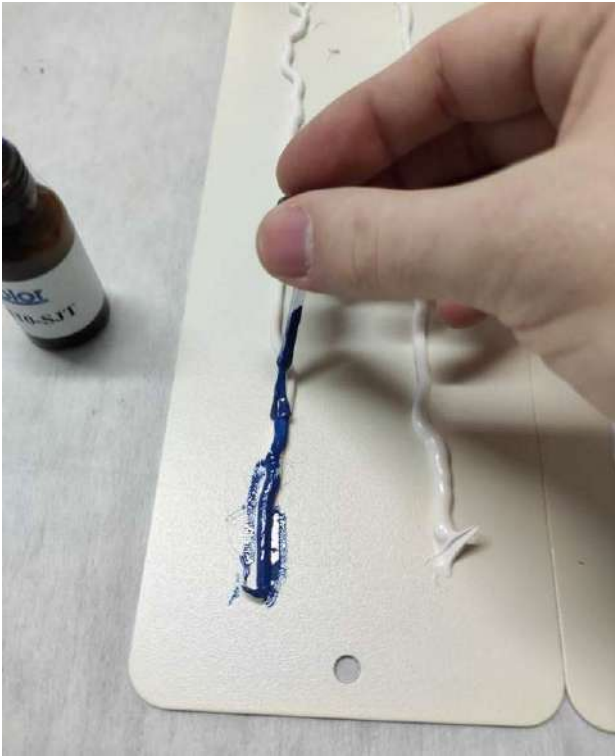


Figure 12-13: Touch-up paint application on silicone sample

3. The adhesion test has been carried out on the silicone sealant covered with the Touch-up kit.



Figure 14 – 15: Results of the Touch-Up paint adhesion test on silicone.

## ***TOUCH-UP KIT***

Touch-up kit for RAL powder coated surfaces

---



Figure 16 – 17: Results of the Touch-up paint adhesion test on silicone.



Figure 18 – 19: Results of the Touch-up paint adhesion test on silicone.

## ***TOUCH-UP KIT***

Touch-up kit for RAL powder coated surface



Figure 20-21: Touch-Up paint detachment on non-paintable silicone

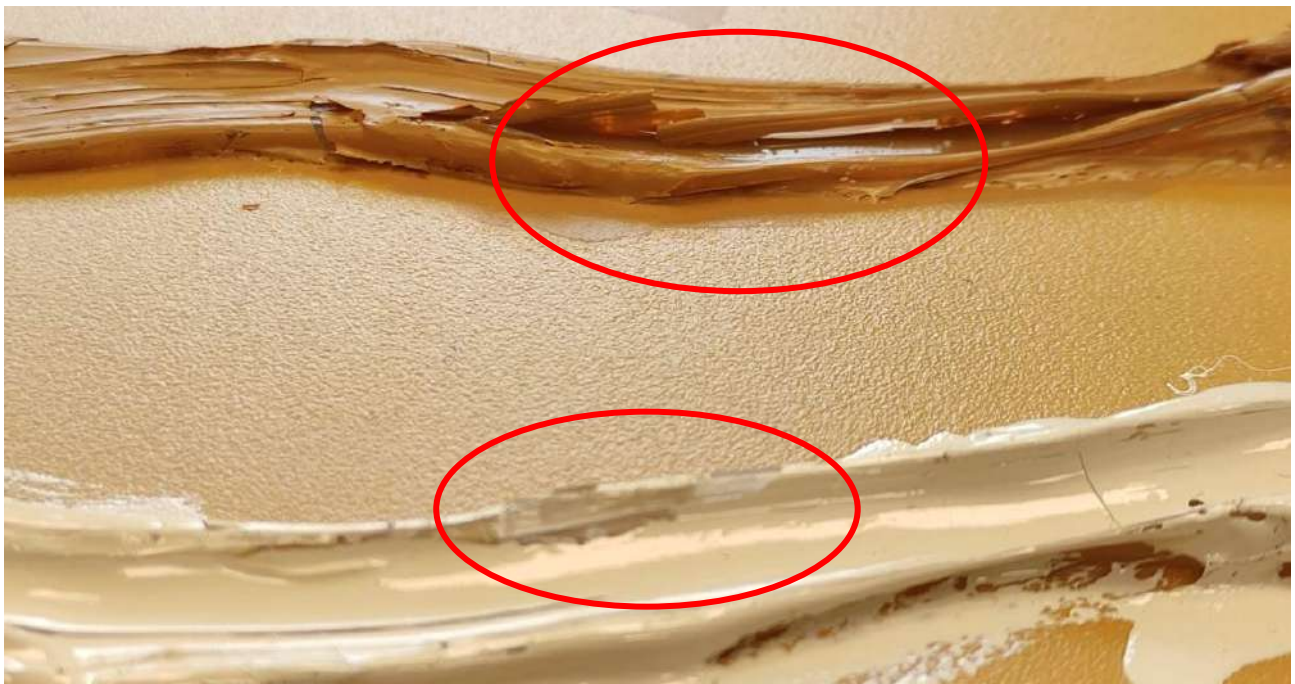


Figure 22: Touch-Up paint detachment on non-paintable silicone

## CONCLUSION

As the above images show, the paint product of the Touch-up Kit adheres perfectly to **paintable silicone**, while it does not adhere to **non-paintable silicone**, where detachments are clearly visible.



### **GICOLOR SRL**

Sede legale: Viale del Lavoro, 5 - 37040 Arcole (VR)

Sede operativa: Via Tagliamento, 4 - 36056 Belvedere di Tezze sul Brenta (VI)

Tel. +39 0424 560208 - Fax +39 0424 564601

