

Gi-SPRAY

Touch-Up spray for powder coated surfaces



Information:

1. PRODUCTS INFORMATION
2. APPLICATION
3. TEST OF HIDING POWER
4. ADHESION TEST

Gi-SPRAY

Touch-Up Spray for powder coated surfaces

1. PRODUCTS INFORMATION

Gi-SPRAY has been designed to touch-up small defect or damaged parts on powder coated surface. Gi-SPRAY atomises and evenly distributes the paint **matching the specific GiColor powder purchased and applied by the customer.**



Picture 1: Gi-SPRAY can

PRODUCT FEATURES AND CURING CYCLE

- Products available in any GiColor shade on customer request;
- After application you have to wait 20/30 minutes before handling the coated object.
 - The dust-free drying time of the Gi-SPRAY is about 10 minutes at room temperature,
- The complete cross-linking of the product takes place between 12 and 24 hours;
- The m2 coverage, i.e. how many square meters can be painted with one spray can, is ca. 0.5 m² of a flat surface; it's important to note that the yield can drop depending on the shape of the object, due to the overspray (for example, in the case of rods, the amount of paint lost is greater than that actually applied to the object).

USED ON RAW METAL:

- For the application on unpainted aluminium, the Gi-Spray has to be paired with Gi-Primer (29100 PRIMER – grey), to achieve an optimal adhesion on the surface.

USED AS TOUCH-UP:

- the Gi-SPRAY product has a good adhesion on surfaces previously painted and properly prepared (e.g. degreasing with cleaners);

NB - OUTSIDE DUST-FREE DRYING TIME AND CROSSLINKING TIME ARE INFLUENCED BY TEMPERATURE: AT LOWER TEMPERATURES THE NEEDED TIME WILL BE MUCH LONGER, ON THE CONTRARY WITH HIGH TEMPERATURES THE TIME WILL BE REDUCED.

Gi-SPRAY

Touch-Up Spray for powder coated surfaces

2. APPLICATION

APPLICATION ON RAW METAL

- Before applying the product make sure that the surface to be treated is **clean, dry and dust-free**;
- Apply a first layer of Gi-Primer and let it rest for 30 minutes (the time can increase up to an hour if the layer applied is thick).
- Shake the can **at least 2 minutes** before use;
- Carry out a spray test in a hidden part;
- Spray one or multiple layers at a distance of 20-25 cm until the defect is masked and/or the desired effect is achieved;

APPLICATION AS TOUCH-UP

- Before applying the product make sure that the surface to be treated is **clean, dry and dust-free**;
- Shake the can **at least 2 minutes** before use;
- Carry out a spray test on a hidden part;
- Spray multiple layers at a distance of 20-25 cm;



Picture 2: Example of application of Gi-SPRAY

N.B. THE APPLICATION OF AN EXCESSIVE QUANTITY OF THE PRODUCT IN ONE LAYER (Gi-PRIMER OR Gi-SPRAY) CAN CAUSE THE DRIPPING OF THE PRODUCT.

Gi-SPRAY

Touch-Up Spray for powder coated surfaces

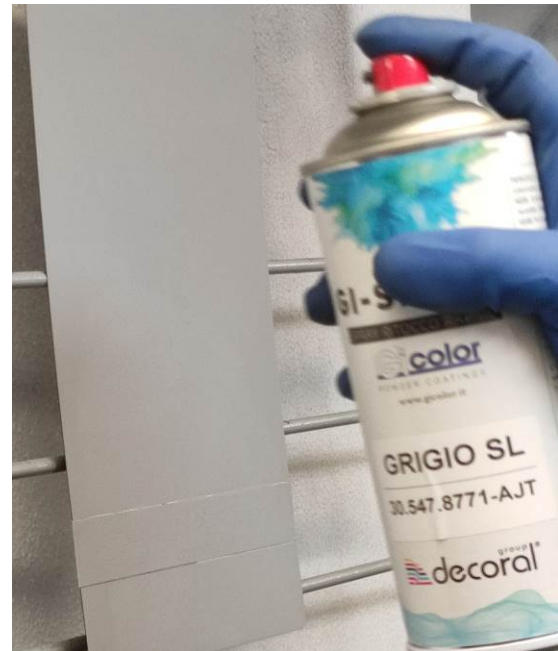
3. TEST OF HIDING POWER

This test allows the assessment of the ability of the Gi-SPRAY to “cover” the surface of an object: higher hiding power means lower thickness to be applied.

For this purpose, a bicolour sample panel is coated with Gi-SPRAY product (Grey SL 30.547.8771-AJT) (**Picture 3**): the higher the hiding power, the smaller the difference between the two halves of the panel.



Picture 3: Sample panel before the application of Gi-SPRAY



Picture 4 – 5: steps of the application of Gi-SPRAY

Gi-SPRAY

Touch-Up Spray for powder coated surfaces



Picture 6 – 7: Result of the Test: Sample panel at the beginning of the test (Left) . Sample panel at the end of the test (Right).

CONCLUSION!

As we can see from the Picture 6-7, the hiding power of the Gi-SPRAY is very high. This allows us to use small quantities of products for touch-ups on sheets, profiles and 3D objects.

Gi-SPRAY

Touch-Up Spray for powder coated surfaces

4. ADHESION TEST

To obtain the correct adhesion of the Gi-Spray product on unpainted aluminium, we need to apply a first layer of Gi-Primer (29100 PRIMER – Grey). This test was performed applying different thickness of Gi-primer to assess the adhesion of our products.

- Application of different thickness of Gi-Primer on the two panels (Picture 8-9);
- Drying of the Gi-Primer for 30 minutes and following application of Gi-Spray (only on half panel);
- Resting period of 24 hours;
- *Cross-cut* test;



Picture 8: Adhesion test of Gi-Spray on a panel, coated with low thickness of Gi-Primer.

Gi-SPRAY

Touch-Up Spray for powder coated surfaces



Picture 9: Adhesion test done on a sample panel, coated with high thickness of Gi-Primer.

CONCLUSION

As we can see by the previous images, the application thickness of the Gi-Primer doesn't affect the adhesion on unpainted aluminum surface, and doesn't affect the adhesion between Gi-Primer and Gi-Spray.



GICOLOR SRL

Registered office: Viale del Lavoro, 5 - 37040 Arcole (VR)

Operational Headquarters: Via Tagliamento, 4 - 36056 Belvedere di Tezze sul Brenta (VI)

Phone +39 0424 560208 - Fax +39 0424 564601

